

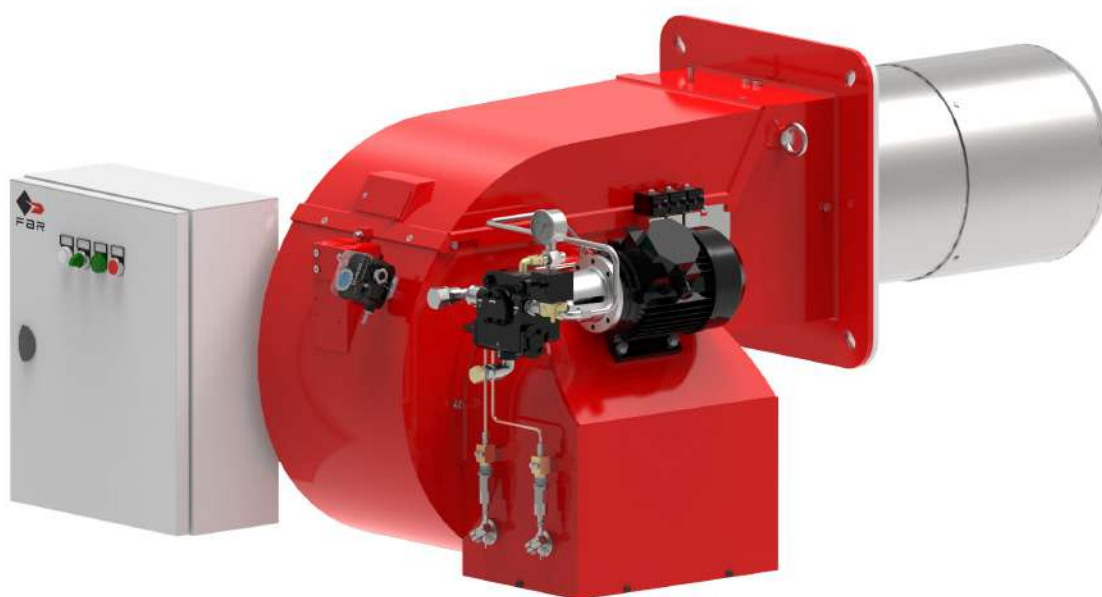
## FGP 190/3 - FGP 250/3 - FGP 350/3 - FGP 450/3

Light oil burners at three stages.

Composed by: fan at high pressurisation, combustion head with adjustment at high efficiency and high flame stability and hydraulic system of regulation combustive air on the three stages of flame.

Compact overall dimensions and disposition rationalized of the components with accessibility facilitated for operations of setting and maintenance.

Complete of flange and gasket for installation on generator, nozzles, flexible pipes, line filter.



**Fig. 1** FGP 350/3

## TECHNICAL DATA

MODEL		FGP 190/3	FGP 250/3	FGP 350/3	FGP 450/3
Flow min. 1°st. / min. 2°st. - max. 2°st. *	[kg/h]	22/60-206	27/80-250	49/140-350	55/160-450
Thermal power min. 1°st. / min. 2°st. - max. 2°st. *	[Mcal/h]	219/612-2100	269/816-2550	488/1428-3570	549/1632-4590
Thermal power min. 1°st. / min. 2°st. - max. 2°st. *	[kW]	255/712-2443	313/949-2965	568/1660-4151	638/1898-5337
Fuel:		LIGHT-OIL 1.5°E a 20°C = 6.2 cSt = 35 sec Redwood N°1			
Intermittent working operation (min. 1 stop every 24 hours) at 3 stages					
Environmental conditions operation / storage:		-15...+40°C / -20...+70°C , humidity max. 80%			
Max temperature combustion air	[°C]	60			
Nominal electric power	[kW]	6	9	11	13
Fan motor	[kW]	5.5	7.5	9	11
Pump motor	[kW]	0.75	1.1	1.5	1.5
Nominal absorption powers	[A]	11.5	15.5	19	21.7
Nominal absorption auxiliary	[A]	0.3	0.5	0.6	0.6
Power supply:		3~400V, 1/N~230V-50Hz			
Degree of electric protection:		IP40			
Noisiness ** min. - max.	[dB(A)]	83-85	84-85	86-86	88-89
Burner weight	[kg]	125	135	208	218

\* Reference conditions: Environment temperature 20°C - Barometric pressure 1013 mbars - Altitude 0 metre (sea level)

\*\* Measured sonorous pressure in the laboratory combustion, with functional burner on beta boiler to 1 metre of distance (UNI EN ISO 3746 law).

## FIRING RATES

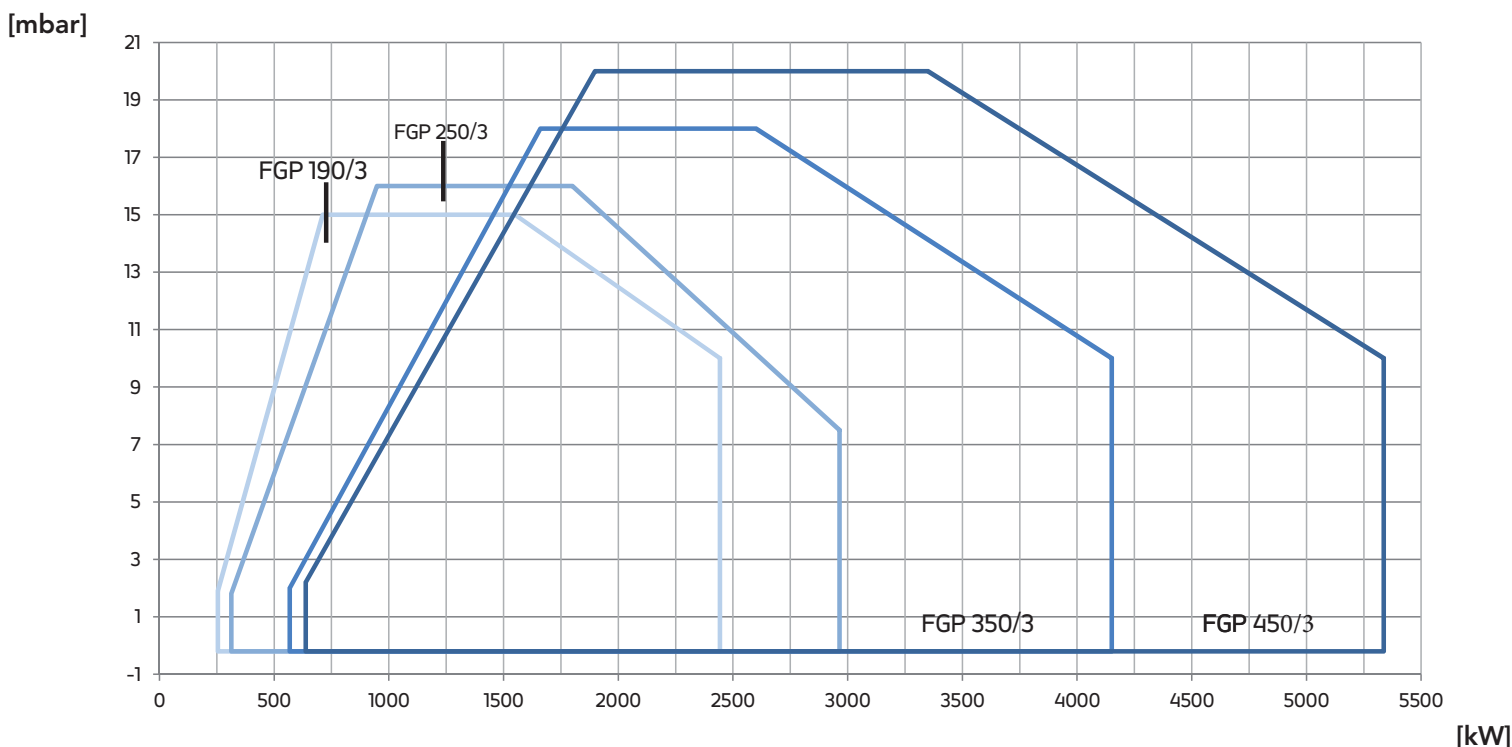
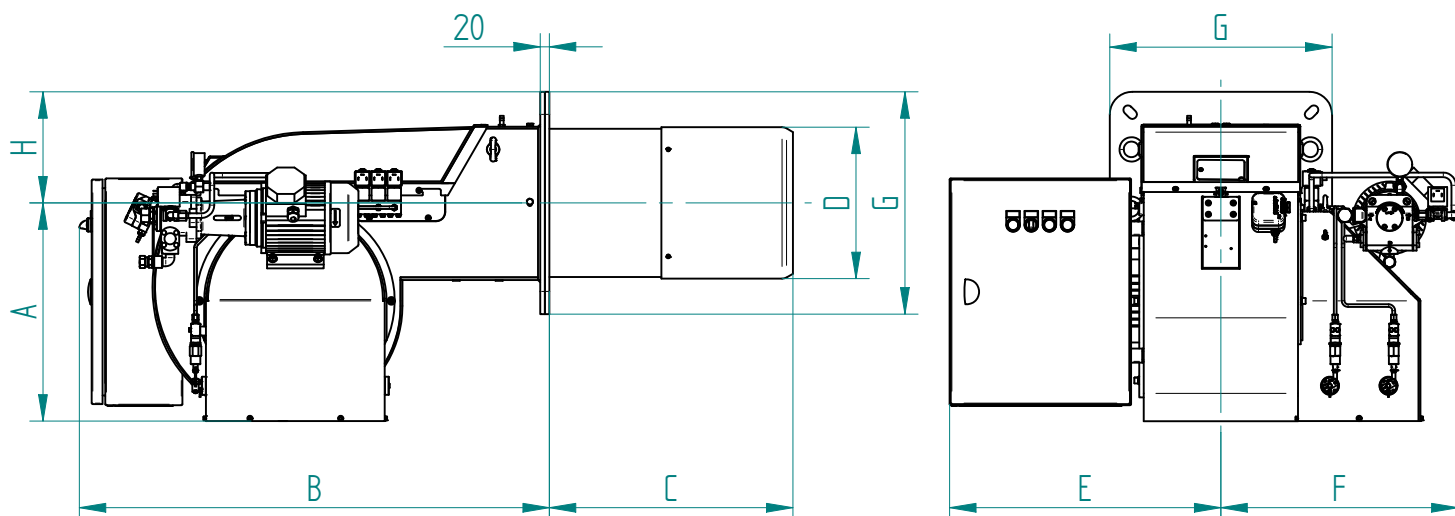


Fig. 2 X = Thermal power Y = Pression in the combustion chamber

The firing rates has been obtained based on test boilers in accordance with EN267 standards and are indicative of matching the burner to the boiler. For the correct operation of the burner bruciatore, combustion chamber dimensions must be in accordance with current regulation. In case of non-compliance, contact the manufacturer.

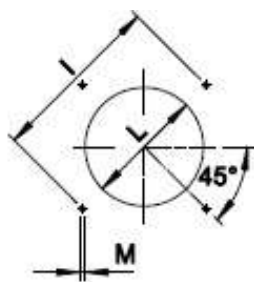
## DIMENSIONS [MM]



**Fig. 3** Dimensions FGP 190/3 - FGP 250/3 - FGP 350/3 - FGP 450/3

MODEL	A	B	C	D	E	F	G	H
FGP 190/3	460	920	495	234	545	429	360	185
FGP 250/3	460	920	500	271	545	460	360	185
FGP 350/3	481	1040	535	334	600	525	490	245
FGP 450/3	481	1040	560	380	600	525	490	245

## BOILER PLATE



The dimensions of the boiler plate must be as indicated in the drawing.

**Fig. 4** Boiler plate

MODEL	I min	I *	I max	L min	L *	L max	M
FGP 190/3	396	424	438	245	280	320	M14
FGP 250/3	396	424	438	280	280	320	M14
FGP 350/3	552	552	580	350	350	450	M14
FGP 450/3	552	552	580	390	390	450	M14

\* Suggested dimension of connection between burner and generator.

## PRODUCT SPECIFICATION

### SHORT DESCRIPTION

Light-oil burners at 3 stages.

### DETAILED SPECIFICATION

Light-oil burner 3 stages; composed by:

- Fan at high pressurisation;
- Combustion head with adjustment at high performance and elevated flame stability;
- Flange and insulating gasket for fixing at boiler;
- Three-phase power supply;
- Photodiode for flame detection;
- IP 40 electric protection level;
- Easy extraction of combustion head without get off the burners by boiler;
- Timer for the activation of the three stage valve: factory setting = 18sec;
- Dedicated motor for the activation of the light-oil pump.

### CONFORMING TO:

- CE rules;
- 2014/30/UE Directive E.M.C.;
- 2014/35/UE Directive L.V.;
- 2014/68/EU Directive M.D.;
- 97/23/CE Directive P.E.D.;
- Reference rules: EN267 (liquid fuel) - EN746-2 (industrial thermoprocessing equipment).

### STANDARD EQUIPMENT

- Flexible hoses for connection;
- Line filter;
- Isomart gasket;
- Nozzles;
- Flange with insulating gasket;
- Burner nameplate;
- Warranty;
- Instruction handbook for installation, use and maintenance.

### OPTIONAL

- Noise protection.