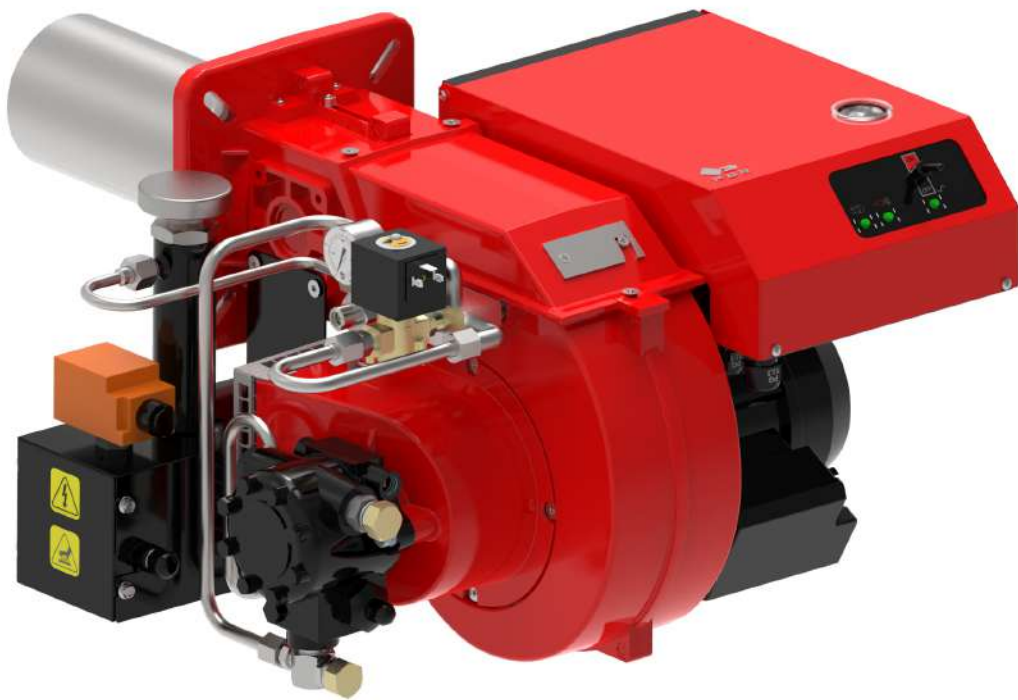


FNDL 8 - FNDL 16 - FNDL 25

Burners for heavy-oil single stage with: fan at high pressurisation, combustion head with adjustment at high efficiency and high flame stability.

Disposition rationalized of the components with accessibility facilitated for operations of setting and maintenance. Complete of flange and gasket for installation on generator, nozzle, flexible pipes, line filter electrically heated and equipped with a thermostat.



TECHNICAL DATA FNDL 8 - FNDL 16 - FNDL 25

MODEL		FNDL 8	FNDL 16	FNDL 25
Flow min. - max. *	[kg/h]	5-8	7-16	12.5-25
Thermal power min. - max. *	[Mcal/h]	49-78.4	68.6-156.8	122.5-245
Thermal power min. - max. *	[kW]	57-91.1	79.8-182	142-285
Fuel: HEAVY-OIL MAX 20°E at 50°C				
Intermitted working operation (min. 1 stop every 24 hours) one stage				
Environmental conditions operation / storage:	-15...+40°C / -20...+70°C, rel. humidity max. 80%			
Max. temperature combustion air	[°C]	60		
Nominal electric power	[kW]	1.7	2	4.8
Fan motor	[kW]	0.25	0.25	0.55
Resistances	[kW]	1.2	1.5	2.4
Fan motor current absorption	[A]	8	10	18.2
Auxiliary current absorption	[A]	0.14	0.14	0.2
Power supply:	1N~230V-50Hz			3/N~400V, 1N~230V-50Hz
Electric protection degree:	IP 44			
Noisiness ** min-max	[dBA]	69	69	74
Burner weight	[kg]	35	36	41

* Reference conditions: Environment temperature 20°C - Barometric pressure 1013 mbars - Altitude 0 metre (sea level).

** Measured sonorous pressure in the combustion lab, with functional burner on beta boiler in a distance of 1 m (UNI EN ISO 3746).

OPERATING RANGE DIAGRAM

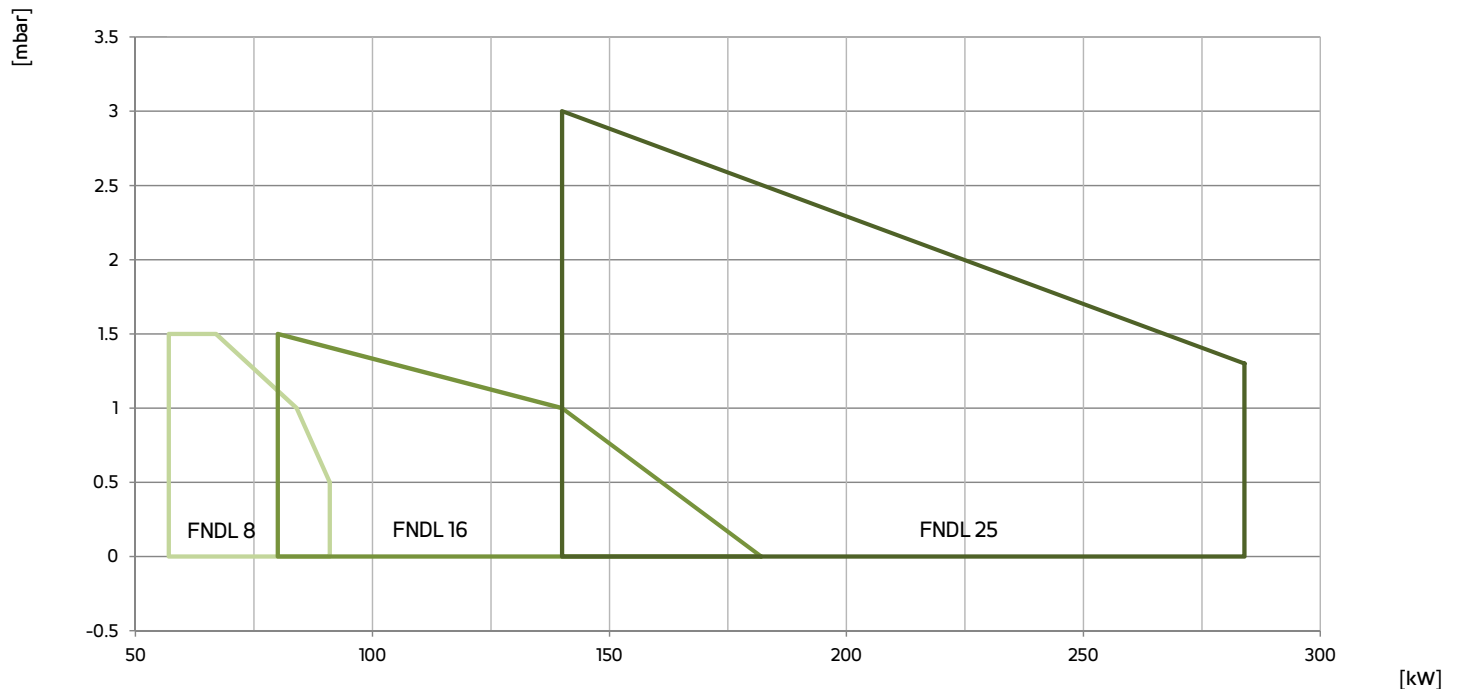


Fig. 1 X = Thermal power Y = Pression in the combustion chamber

The firing rates has been obtained based on test boilers in accordance with EN267 standards and are indicative of matching the burner to the boiler. For the correct operation of the burner, combustion chamber dimensions must be in accordance with current regulation. In case of non-compliance, contact the manufacturer.

DIMENSIONS [MM]

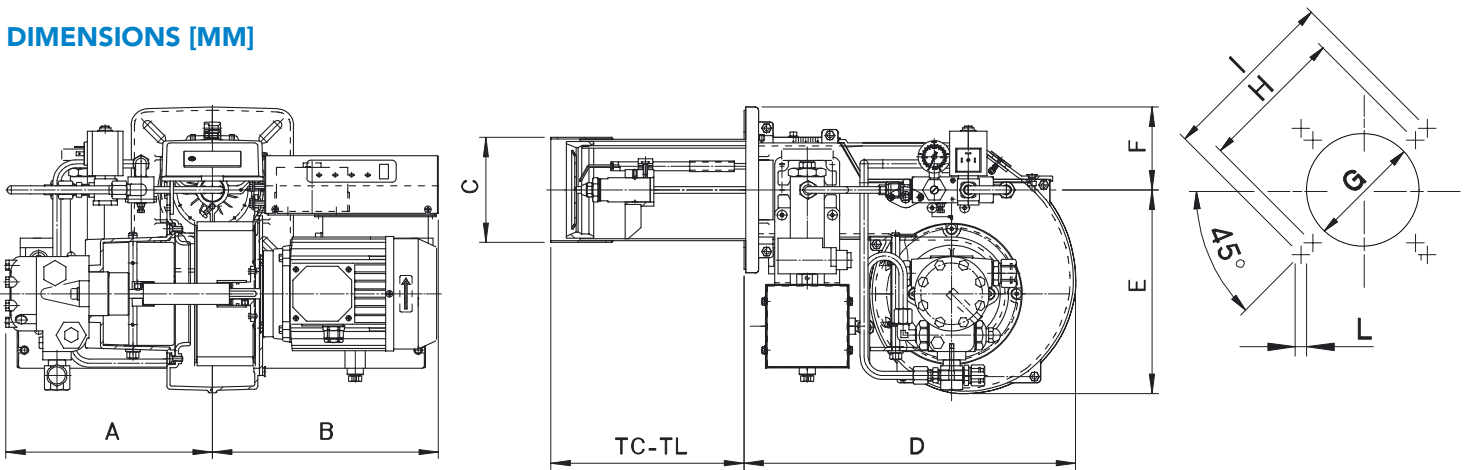


Fig. 2 Dimensions FNDL 8 - FNDL 16 - FNDL 25

MODEL	A	B	C	D	E	F	G	H	I	L
FNDL 8	253	294	107	410	251	102	120	180	226	10
FNDL 16	253	294	107	410	251	102	120	180	226	10
FNDL 25	255	294	130	410	251	102	140	180	226	10

FLAME TUBE LENGTH

Flame tube length must be selected based on the specifications supplied by boiler manufacturer and, in any case, it must be greater than the thickness of the boiler door included its insulation. In case of boilers with flame inversion or front flue combustion chambers, it is necessary to insulate the area between the flame tube and front door with refractory material. This protection material must not impede flame tube extraction.

MODEL		TC	TL **
FNDL 8	mm	110	230
FNDL 16	mm	110	230
FNDL 25	mm	120	240

** For different flame lengths, please contact our Technical-Sales Department.

PRODUCT SPECIFICATION

SHORT DESCRIPTION

Heavy-oil burners single stage.

DETAILED SPECIFICATION

Heavy-oil burners single stage composed by:

- Fan at high pressurisation;
- Combustion head with adjustment at high performance and elevated flame stability;
- Flange and insulating gasket for fixing at boiler;
- Photodiode for flame detection;
- IP 44 electric protection level;

CONFORMING TO:

- CE rules;
- 2014/30/UE Directive E.M.C.;
- 2014/35/UE Directive L.V.;
- 2006/42/CE - 2006/42/EG - 2006/42/EC Directive MAC;
- 2014/68/EU (art.4, par.3) Directive P.E.D.;
- Reference rules: EN267 (liquid fuel) - EN746-2 (industrial thermoprocessing equipment).

STANDARD EQUIPMENT

- Flexible hoses for connection;
- Line filter electrically heated and equipped with a thermostat;
- Isomart gasket;
- Nozzle;
- Flange with insulating gasket;
- Burner nameplate;
- Warranty;
- Instruction handbook for installation, use and maintenance.

OPTIONAL

- Noise protection.