

GAS X5/2 CE-LX4

Burners for gas two stages low emissions certified in conformity with CE 676 class 4 ($\text{NO}_x \leq 60 \text{ mg/kWh}$) composed by: die-cast aluminum body, fan at high pressurisation, combustion head with adjustment at high efficiency and high flame stability and protection cover with noise reduction plate.

Compact overall dimensions and disposition rationalized of the components with accessibility facilitated for operations of setting and maintenance.

Gas train complete of one-block system composed by: 1st stage valve class A, 2nd stage valve slow opening class A, filter, stabilizer and minimum gas pressure switch.

Complete of connector plug / socket 7 poles, connector plug / socket 4 poles (for the 2nd stage modulation), flange and gasket for installation on generator.

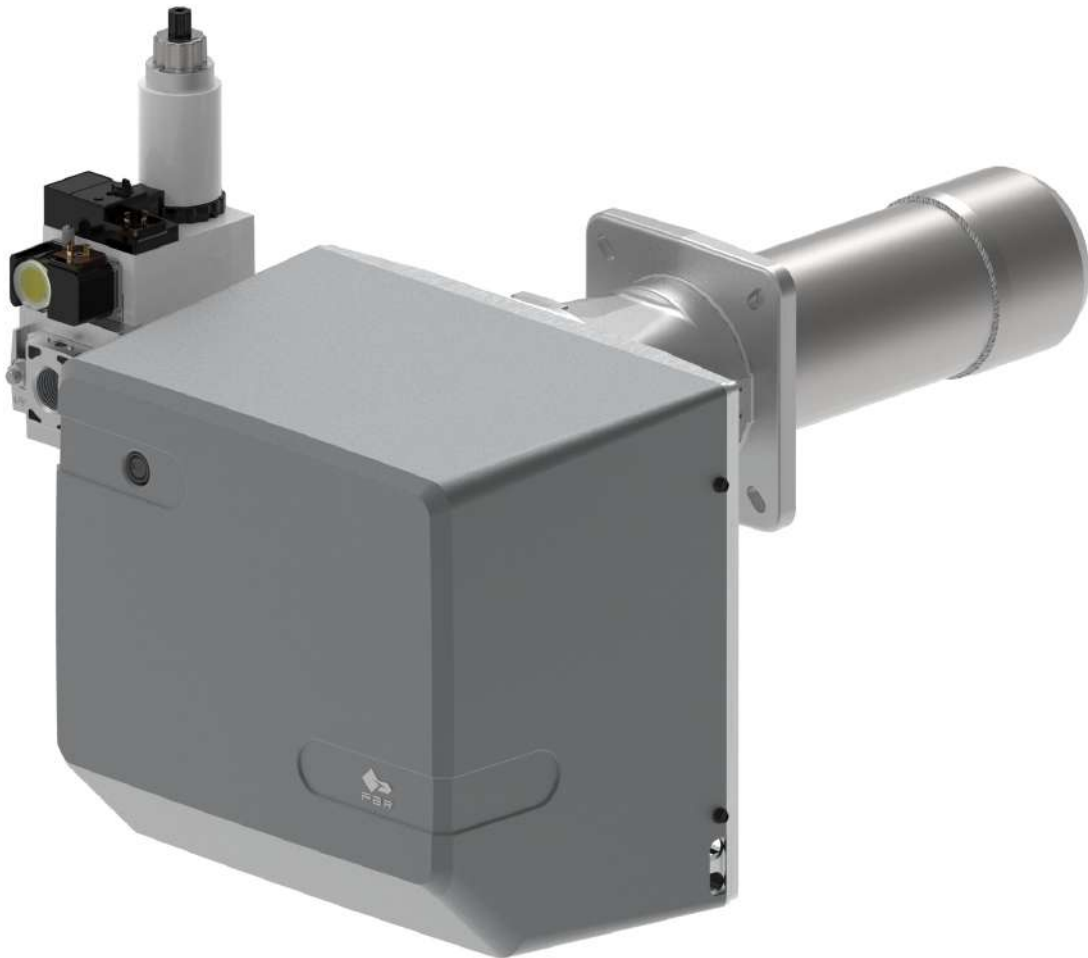


Fig. 1 GAS X5/2 CE-LX4

TECHNICAL DATA AND OPERATING RANGE DIAGRAM

MODEL		GAS X5/2 CE-LX4
Thermal power min. 1°st. / min. 2°st. - max. 2°st. *	[Mcal/h]	58.5/154.8-344
Thermal power min. 1°st. / min. 2°st. - max. 2°st. *	[kW]	68/180-400
Gas flow G20 (NATURAL GAS) min. 1°st. / min. 2°st. - max. 2°st. *	[Nm³/h]	6.8/18.1-40.2
Gas flow G31 (L.P.G.) min. 1°st./ min. 2°st. - max. 2°st. *	[Nm³/h]	3.3/7.0-15.6
Fuel: NATURAL GAS (second family) - L.P.G. (third family)		
Fuel category: I2R,I2H,I2L,I2E,I2E+,I2Er,I2ELL,I2E(R) -- I3B/P,I3+,I3P,I3B,I3R		
Intermittent working operation (min. 1 stop every 24 hours) two stages		
Environmental conditions operation / storage:	-15...+40°C / -20...+70°C, rel. humidity max. 80%	
Max. temperature combustion air	[°C]	60
Min. pressure gas train D1"-S NAT. GAS/L.P.G. **	[mbar]	55.2/36.5
Min. pressure gas train D1"1/4-S NAT. GAS/L.P.G. **	[mbar]	31.5/27.4
Min. pressure gas train D1"1/2-S NAT. GAS/L.P.G. **	[mbar]	15.9/21.1
Max. pressure at the entry of valves (Pe. max)	[mbar]	360
Nominal electric power	[W]	540
Fan motor	[W]	370
Nominal motor current absorption	[A]	2.4
Power supply:	1/N~230V-50Hz	
Electric protection degree:	IP 40	
NOx class, NATURAL GAS (Gas second family):	4	
NOx class, L.P.G. (Gas third family):	4	
Noisiness *** min. - max.	[dB(A)]	67-71
Burner weight ****	[kg]	26

* Reference conditions: Environment temperature 20°C - Barometric pressure 1013 mbars - Altitude 0 metre (sea level).

** Minimal feeding-gas pressure to the gas train to get the maximum power of the burner, considering counter-pressure in combustion chamber of value 0 (zero).

*** Measured sonorous pressure in the laboratory combustion, with functional burner on beta boiler to 1 metre of distance (UNI EN ISO 3746 law - method of control Class 3 - The tolerance of the measured pressure can be taken equal to ± 1 [dB(A)]).

**** For burner with cover in steel (F) add 5 kg to the weight.

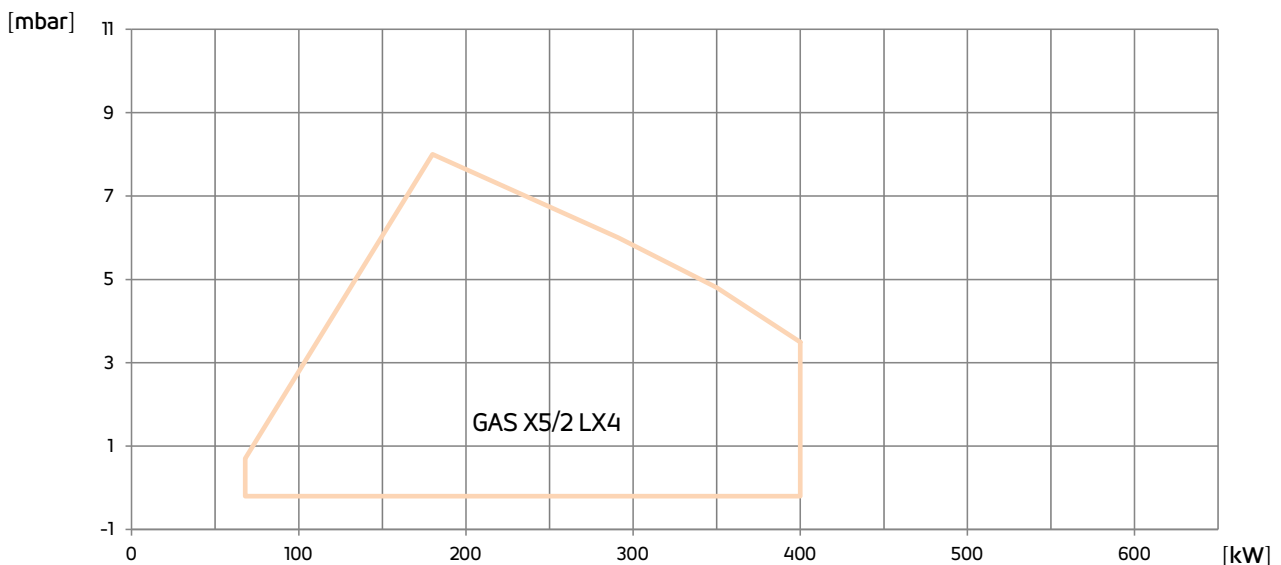


Fig. 2 X = Thermal power Y = Pression in the combustion chamber

For L.P.G. min. thermal power 1° stage: 73 Mcal/h - 85 kW.

The firing rates has been obtained based on test boilers in accordance with EN676 standards and are indicative of matching the burner to the boiler. For the correct operation of the burner, combustion chamber dimensions must be in accordance with current regulation. In case of non-compliance, contact the manufacturer.

DIMENSIONS [MM]

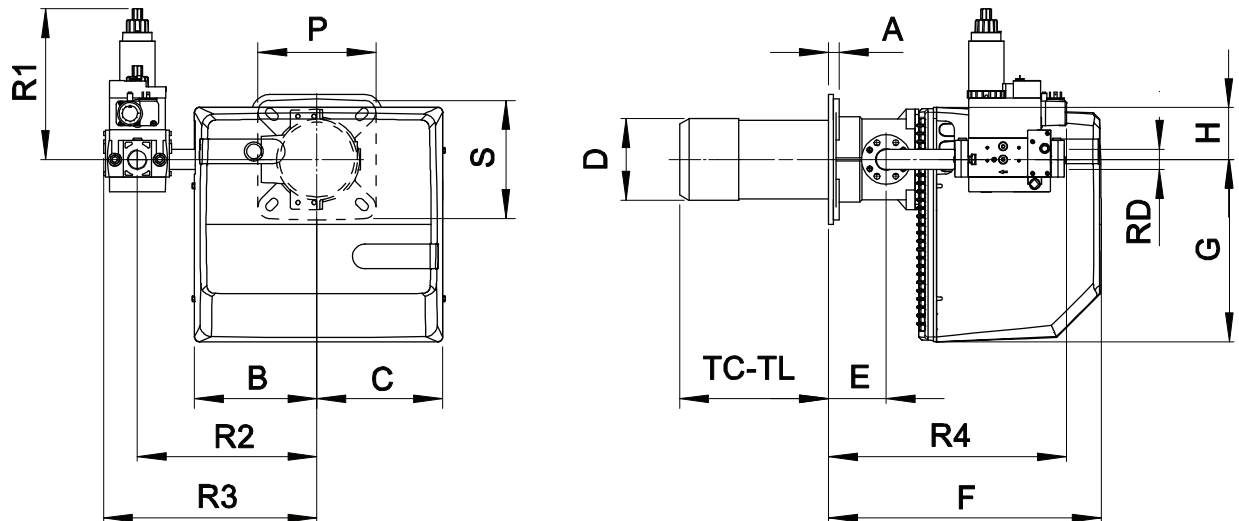
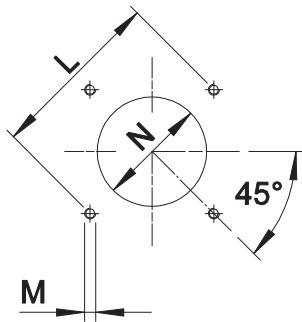


Fig. 3 Dimensions GAS X5/2 CE-LX4

MODEL	A	B	C	D	E	F	G	H	P	S	R1	R2	R3	R4	RD	Gas train weight
GAS X5/2CE-LX4 D1"-S	18	207	213	138	98	462	310	90	200	200	260	305	362	403	Rp 1	9,5 kg
GAS X5/2CE-LX4 CT - D1"-S	18	207	213	138	98	462	310	90	200	200	260	305	480	403	Rp 1	10,5 kg
GAS X5/2CE-LX4 D1"1/4-S	18	207	213	138	98	462	310	90	200	200	260	305	362	450	Rp 1 1/4	9,5kg
GAS X5/2CE-LX4 CT-D1"1/4-S	18	207	213	138	98	462	310	90	200	200	260	305	480	450	Rp 1 1/4	10,5 kg
GAS X5/2CE-LX4 D1"1/2-S	18	207	213	138	98	462	310	90	200	200	270	305	485	550	Rp 1 1/2	12,5 kg
GAS X5/2CE-LX4 CT - D1"1/2-S	18	207	213	138	98	462	310	90	200	200	270	305	485	550	Rp 1 1/2	13,5 kg

TC-TL: see "flame tube length"

BOILER PLATE



* Suggested dimension
 ** Suggested dimension of connection between burner.

Fig. 4 Boiler plate

MODEL		L min	L *	L max	M	N min	N **	N max
GAS X5/2 CE-LX4	mm	205	215	226	M10	150	150	180

FLAME TUBE LENGTH

Flame tube length must be selected based on the specifications supplied by boiler manufacturer and, in any case, it must be greater than the thickness of the boiler door included its insulation.
 In case of boilers with flame inversion or front flue combustion chambers, it is necessary to insulate the area between the flame tube and front door with refractory material. This protection material must not impede flame tube extraction.

MODEL		TC	TL ***
GAS X5/2 CE-LX4	mm	250	335

*** For different flame lengths, please contact our Technical-Sales Department.

PRODUCT SPECIFICATION**SHORT DESCRIPTION**

Burners for gas two stages low emissions certified in conformity with CE 676 class 4 ($\text{NO}_x \leq 60 \text{ mg/kWh}$).

DETAILED SPECIFICATION

Burners for gas two stages low emissions certified in conformity with CE 676 class 4 ($\text{NO}_x \leq 60 \text{ mg/kWh}$); composed by:

- Aluminum body;
- Fan at high pressurisation;
- Combustion head with adjustment at high performance and elevated flame stability equipped with steel blast tube and steel flame disc;
- Protection cover with noise reduction plate;
- Flange and insulating gasket for fixing at boiler;
- Single phase power supply;
- Safety air pressure switch to stop the burner in lock-out in case of failed or anomalous fan operation;
- Gas train complete of one-block system composed by: 1st stage valve class A, 2nd stage valve slow opening class A, filter, stabilizer and minimum gas pressure switch;
- Ionisation probe for flame detection;
- IP 40 electric protection level;
- Servomotor for air shutter and for the consent of the 2nd stage gas valve;
- Moving shutter with total closure when idle in order to reduce at the least energy losses related to boiler cooling down.

CONFORMING TO:

- CE rules;
- 2014/30/UE Directive E.M.C.;
- 2014/35/UE Directive L.V.;
- 2006/42/CE - 2006/42/EG - 2006/42/EC Directive M.D.;
- GAS 2016/426/UE Regulation;
- Reference rules: EN676 (gas) – EN 746-2 (industrial thermoprocessing equipment).

STANDARD EQUIPMENT

- Isomart gasket;
- Flange with insulating gasket;
- Burner nameplate;
- Warranty;
- Instruction handbook for installation, use and maintenance.

OPTIONAL

- Antivibration couplings;
- Handle gas taps.